

**RRBP4 Antibody (N-term)**  
**Affinity Purified Rabbit Polyclonal Antibody (Pab)**  
**Catalog # AP20177A****Specification**

---

**RRBP4 Antibody (N-term) - Product Information**

Application	WB,E
Primary Accession	<a href="#">P02753</a>
Other Accession	<a href="#">P04916</a> , <a href="#">P27485</a> , <a href="#">Q00724</a> , <a href="#">NP_006735.2</a> , <a href="#">Q28369</a>
Reactivity	Mouse
Predicted	Horse, Pig, Rat
Host	Rabbit
Clonality	Polyclonal
Isotype	Rabbit IgG
Calculated MW	23010
Antigen Region	11-40

**RRBP4 Antibody (N-term) - Additional Information****Gene ID** 5950**Other Names**

Retinol-binding protein 4, Plasma retinol-binding protein, PRBP, RBP, Plasma retinol-binding protein(1-182), Plasma retinol-binding protein(1-181), Plasma retinol-binding protein(1-179), Plasma retinol-binding protein(1-176), RBP4

**Target/Specificity**

This RBP4 antibody is generated from rabbits immunized with a KLH conjugated synthetic peptide between 11-40 amino acids from the N-terminal region of human RBP4.

**Dilution**

WB~~1:1000

E~~Use at an assay dependent concentration.

**Format**

Purified polyclonal antibody supplied in PBS with 0.09% (W/V) sodium azide. This antibody is purified through a protein A column, followed by peptide affinity purification.

**Storage**

Maintain refrigerated at 2-8°C for up to 2 weeks. For long term storage store at -20°C in small aliquots to prevent freeze-thaw cycles.

**Precautions**

RRBP4 Antibody (N-term) is for research use only and not for use in diagnostic or therapeutic procedures.

**RRBP4 Antibody (N-term) - Protein Information**

**Name** RBP4

**Function** Retinol-binding protein that mediates retinol transport in blood plasma (PubMed:[5541771](#)). Delivers retinol from the liver stores to the peripheral tissues (Probable). Transfers the bound all-trans retinol to STRA6, that then facilitates retinol transport across the cell membrane (PubMed:[22665496](#)).

**Cellular Location**

Secreted

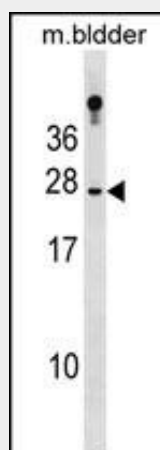
**Tissue Location**

Detected in blood plasma and in urine (at protein level).

**RBP4 Antibody (N-term) - Protocols**

Provided below are standard protocols that you may find useful for product applications.

- [Western Blot](#)
- [Blocking Peptides](#)
- [Dot Blot](#)
- [Immunohistochemistry](#)
- [Immunofluorescence](#)
- [Immunoprecipitation](#)
- [Flow Cytometry](#)
- [Cell Culture](#)

**RBP4 Antibody (N-term) - Images**

RBP4 Antibody (N-term) (Cat. #AP20177a) western blot analysis in mouse bladder tissue lysates (35ug/lane). This demonstrates the RBP4 antibody detected the RBP4 protein (arrow).

**RBP4 Antibody (N-term) - Background**

This protein belongs to the lipocalin family and is the specific carrier for retinol (vitamin A alcohol) in the blood. It delivers retinol from the liver stores to the peripheral tissues. In plasma, the RBP-retinol complex interacts with transthyretin which prevents its loss by filtration through the kidney glomeruli. A deficiency of vitamin A blocks secretion of the binding protein posttranslationally and results in defective delivery and supply to

the epidermal cells.

#### **RBP4 Antibody (N-term) - References**

Wang, S.N., et al. J. Formos. Med. Assoc. 109(6):422-429(2010)  
Liu, X.H., et al. Zhonghua Yi Xue Za Zhi 90(18):1251-1254(2010)  
Ku, Y.H., et al. J. Int. Med. Res. 38(3):782-791(2010)  
Giacomozzi, C., et al. J. Endocrinol. Invest. 33(4):218-221(2010)  
Nair, A.K., et al. PLoS ONE 5 (7), E11444 (2010) :

#### **RBP4 Antibody (N-term) - Citations**

- [O-GlcNAcylation disrupts STRA6-retinol signals in kidneys of diabetes.](#)